

ELENTARI SL



ELENTARI SL is a specialized luminaire distinguished by high color rendering index (Ra / CRI - above 98) thanks to this we get the possibility of proper color reproduction (very close to the natural one). The luminaire has been equipped with a power supply with adjustable light intensity. Its original shape is applicable to professional lighting of smaller and large surfaces.

Example applications:

Hairdressing salons, dental and cosmetic surgeries, art galleries, printing houses, graphic stands, shops, etc

Name	Power [W] *	Luminous flux	Protection class	IP	IK	CRI	CCT
ELENTARI SL	200	17000 lm	I	IP20	IK04	98	4000

Different parameters on request. Luminous flux for Ta=25°C

* Fluent power adjustment 50-200 W.

Installation: suspended

Supply voltage: 230V AC / 50-60Hz

Ambient temperature range: -20°C...+40°C

Lifetime L90B10: 50 000h

Power factor: >0,9

Housing: aluminium, PMMA

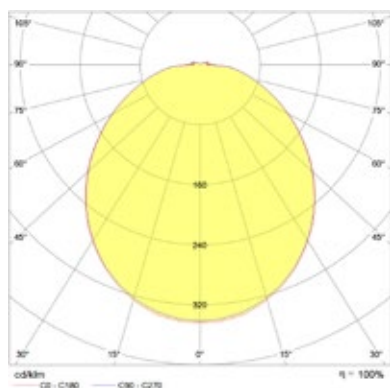
Warranty: 5 years

Dimensional drawing:

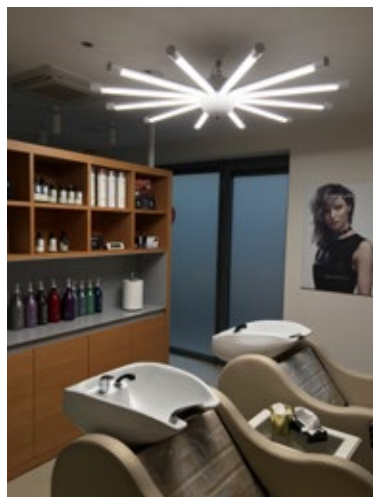
Name	L	H	F	Weight
ELENTARI SL	1445	270	44	10 kg

Light beam curves:

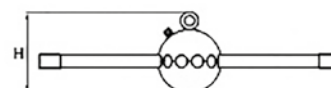
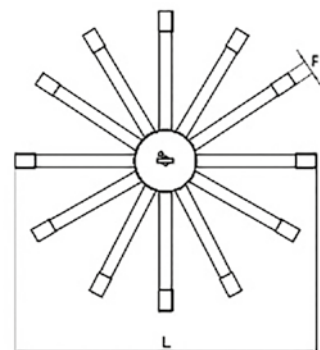
Beam angle (110°)



Typical application:



Hairdresser Maniewski Wrocław



Luminous flux tolerance +/-10%

Our products are constantly upgraded. We reserve right to any construction changes without previous notice.