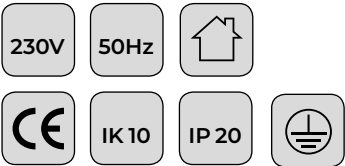


AURE ZK



The AURE ZK series luminaires are designed to illuminate prison cells, places exposed to specific acts of vandalism and areas with difficult working conditions prevail.

Example applications:

Prison cells, police detention centers, correctional facilities as well as underground passages and others exposed to destruction or theft.

Name	Power [W]	Luminous flux	Protection class	IP	IK	CRI	CCT	Luminous efficiency up to
AURE ZK	5	700 lm	I	IP20	IK10	>80	4000K	140 lm/W
	10	1400 lm	I	IP20	IK10	>80	4000K	140 lm/W
	15	2100 lm	I	IP20	IK10	>80	4000K	140 lm/W
	20	2800 lm	I	IP20	IK10	>80	4000K	140 lm/W

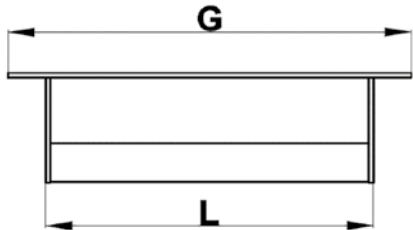
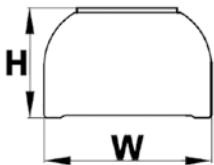
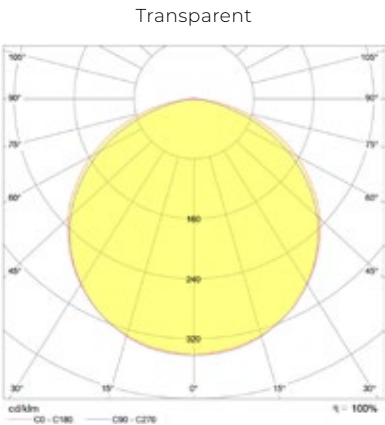
Different parameters on request.

Installation: Surface mounted
Supply voltage: 230V AC / 50-60Hz
Ambient temperature range: -35°C...+50°C
Lifetime L80B50: 80 000h
Power factor: >0,9
Housing: aluminum, PC transparent
Warranty: 5 years

Dimensional drawing:

Name	L	H	W	G	Weight
AURE ZK	201	67	102	245	1,2 kg

Light beam curves:



Luminus flux tolerance +/-10%
Our products are constantly upgraded. We reserve right to any construction changes without previous notice.